

Moving Upstream

- *Chris Mules*
- *Chief Planning & Funding Officer*
- *Counties Manukau DHB*

COUNTIES MANUKAU DISTRICT HEALTH BOARD
A Community Partnership

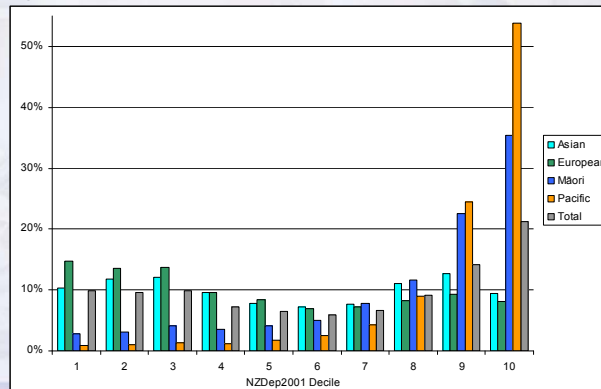
Counties Manukau today

- **Large and fast growing**
 - 451,100 - 10.9% of New Zealand
 - 15% growth 2001-2007
 - 602,000 by 2026
 - 2% growth pa; twice NZ rate
 - 20% of the new NZ pop comes here
- **Young**
 - 25% < 15 years (13% of NZ's children)
 - 47% < 30 years
- **Ethnically diverse**
 - Maori 17%
 - Pacific people 21%
 - Asian 16%
- **Poor**

COUNTIES MANUKAU DISTRICT HEALTH BOARD
A Community Partnership

It's about disparities

Percentage of people by NZDep01 decile and ethnic group for Counties Manukau, Census 2001



COUNTIES MANUKAU DISTRICT HEALTH BOARD
A Community Partnership

It's not just a local issue

- Counties Manukau's share of the national population

- 37% Pacific - 93,200
- 12% Māori - 77,500
- 20% Deprivation groups 9 & 10
- 24% children living in Deprivation groups 9 & 10

⇒ *If we don't make a difference, New Zealand won't*

COUNTIES MANUKAU DISTRICT HEALTH BOARD
A Community Partnership

These are not new issues



Where a great proportion of the people are suffered to languish in helpless misery, that country must be ill-policed and wretchedly governed: a decent provision for the poor is the true test of civilization.

- Dr Samuel Johnson, 1770

The CMDHB response

- This is about the determinants of health
 - Employment and income
 - Education
 - Housing
 - Behaviours (diet, exercise, smoking, etc)
 - Access to health care

➡ *We can't make a difference on our own*

There's a whole lot of intersectoral action going on

- **Employment/income**
 - PATHS
 - Mental health
- **Housing**
 - Healthy Housing
 - Mental health and housing
 - Supported housing for older people
- **Chronic disease**
 - Let's Beat Diabetes
- **Youth education**
 - AIMHI
 - School based services
 - Alternative education
 - Teen parent units
- **Youth justice**
 - Youth justice facilities

PATHS outcomes (Dec 2006)

- 324 people enrolled from 623 referrals (52%)
- **Personal health** (36 months):
 - 28% in employment (part or full-time)
 - 68 participants into employment
- **Mental health** (13 months):
 - 18% in employment (whether part or full-time)
 - 15 participants into employment
- Accessing appropriate referrals is the rate-limiting factor
- Scoping a new model to increase scale

Health & Housing: It's taken us a long time

'The connection between health and the dwellings of the population is one of the most important that exists'

- Florence Nightingale 1820-1910



COUNTIES MANUKAU DISTRICT
HEALTH BOARD
A Community Partnership


Healthy Housing outcomes – Counties Manukau

- 3269 joint assessments; 2926 households with issues resolved
- Housing
 - Quality of stock improved
 - Crowding reduced
 - Improved sense of well-being
 - Increased community and education participation
- Health
 - 37% decrease in housing-related hospital admissions
 - 9% increase in families seeking primary health care (esp. immunisation; cellulitis; diabetes)
 - Increased outpatients attendances

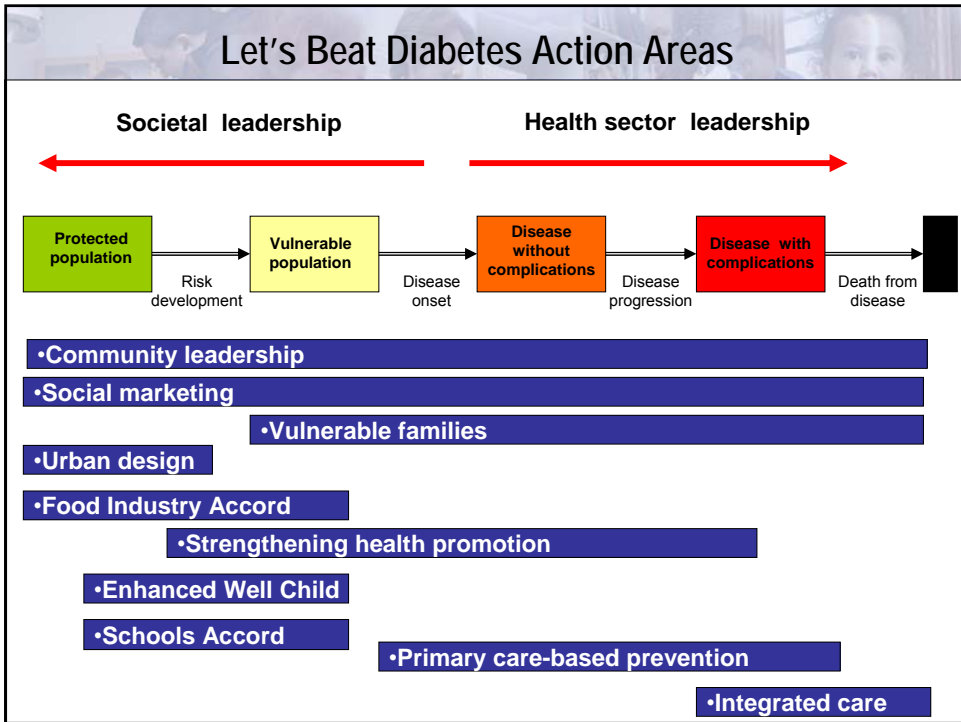
COUNTIES MANUKAU DISTRICT
HEALTH BOARD
A Community Partnership

Healthy Housing outcomes

- Pacific family in 3-bdrm Mangere home
- Mum, Dad and 7 children aged 1-22
- 4 children under 10 years
- Parents on SB; both have diabetes
- Children have respiratory disease
- High prevalence of skin infections
- Outcomes:
 - ✓ House reconstruction finished April 2007
 - ✓ 6 bedrooms (up from 3)
 - ✓ Occupancy ratio 1.5 (down from 3)
 - ✓ Accessible bathroom, kitchen relocation, expanded living area, decking



COUNTIES MANUKAU DISTRICT HEALTH BOARD
A Community Partnership



Let's Beat Diabetes partners

| | |
|----------|---|
| National | Ministries of Health, Education, Social Development; SPARC, Housing NZ, Health Sponsorship Council, Heart Foundation |
| District | Councils (Manukau, Papakura, Franklin), Auckland Regional Public Health, Counties Manukau Sport, Diabetes Auckland, Diabetes Projects Trust, Salvation Army, Auckland City Mission, Plunket |
| Local | Community groups, Marae/iwi collectives, Pacific churches, health providers & professionals, schools/kura & pre-school |
| Industry | McDonald's, Coca Cola, Progressive Enterprises (Foodtown), Fonterra, Frucor Beverages, Nestle, food suppliers/manufacturers, tuckshop/canteen operators, other fast food operators |
| Other | Auckland University (School of Population Health), Phoenix Research, employers |

Intersectoral action: learnings

- Identify the common ground
- Establish strong and committed leadership
- Invest time upfront
- Balance local responsiveness with central agency desire for standardisation
- Balance innovation and evidence
- Acknowledge that costs and benefits don't fall evenly
- Develop explicit KPIs, monitoring and evaluation
- Build on success

Lifting the game in Counties Manukau

- A period of reflection and discussion
 - Leaders of agencies willing to act
- Whichever door we walk through, do we end up in the same room?
- Opportunity for a large scale, multi-agency response
 - Moving from margins to the core
 - Whole needs of whole families
 - Relatively small number of families with poor outcomes, high needs and high resource input
 - Likely to be high proportion of Maori and Pacific
 - Intensive case management
 - It's about communities as well as families